

Optical Filter

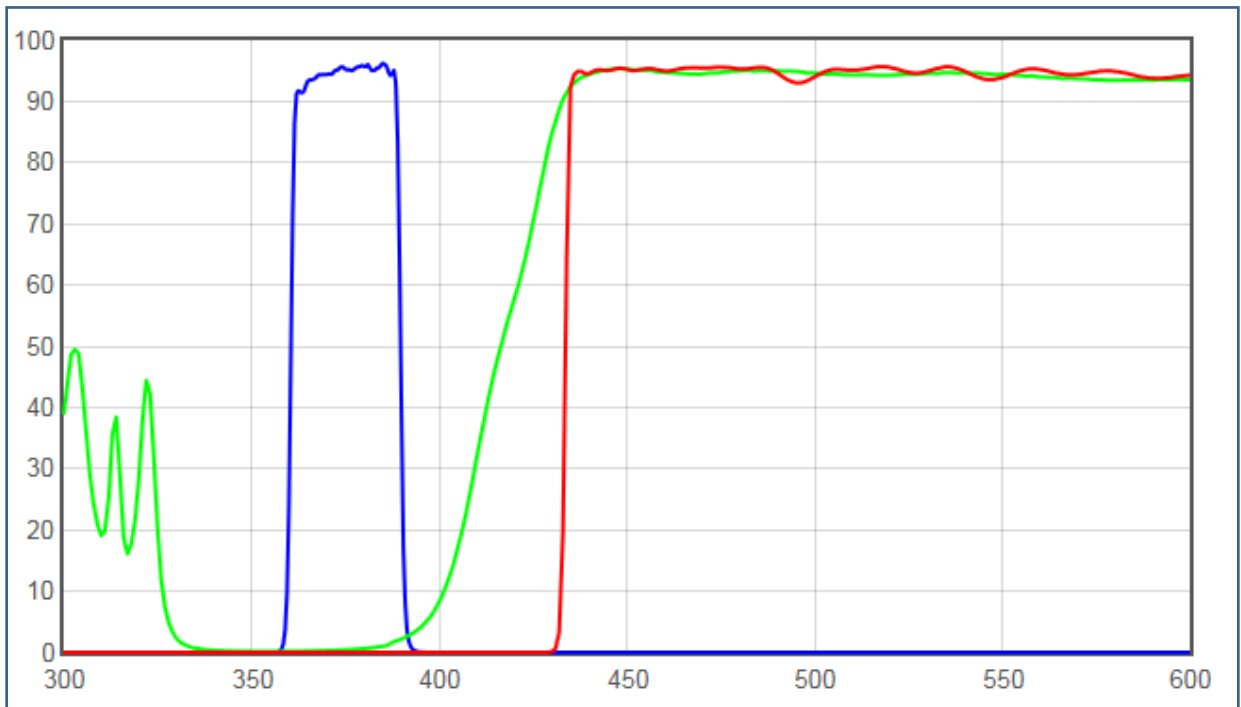
JNO-U(L)

JNOPTIC Filter

– Filter set for UV/DAPI Longpass

- JNO-U(L) filter set induces the light of the UV wavelength range to the sample and leads the generated fluorescence to the observation system.
- UV excitation (Longpass Emission)
- EX : 361~389nm, BS : 415nm, EM : 435nm

1. JNO-U(L) Spectrum



Filters

- AT375/28x
- AT415DC
- AT435lp

Type

- EX
- BS
- EM

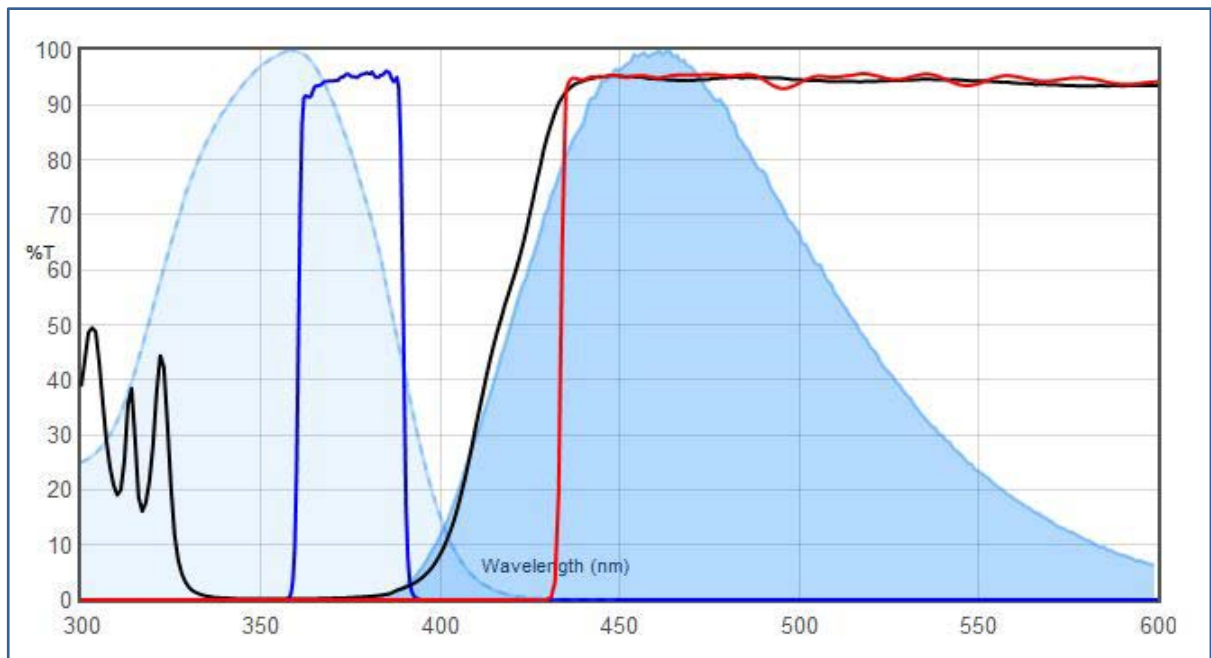
2. JNO-U(L) Spec

- Typical Application(s) : Widefield Microscopy
- Coating : Sputter/Hard Coated
- Round excitation and emission filters mounted in anodized aluminum rings 2.3mm thick, up to 25mm in diameter (for standard sizes)
- Rectangular dichroics up to 26x38mm, 1mm thick, to fit standard microscope manufacturer filter cubes (for standard sizes)

***** For filters larger than 25mm and dichroics larger than 26x38mm, please contact us for pricing.**

3. Main Fluorochromes : DAPI

* DAPI VS JNO-U(L)



DAPI Excitation

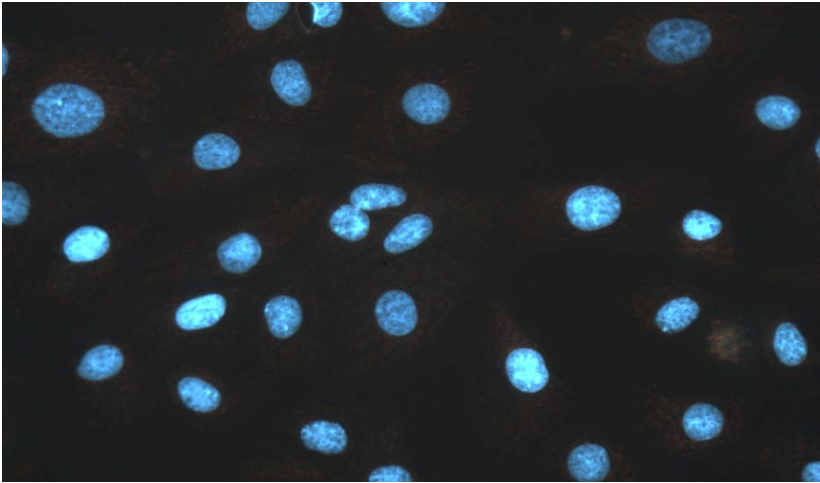
AT375/28x (EX)

AT435lp (EM)

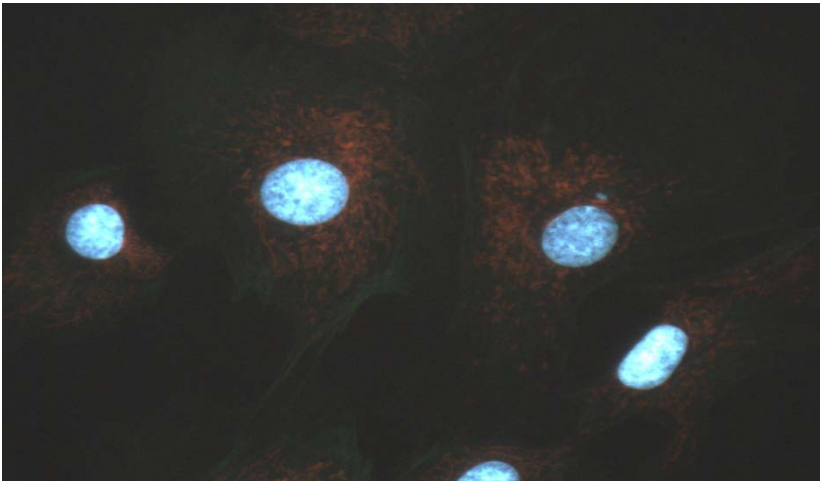
DAPI Emission

AT415DC (BS)

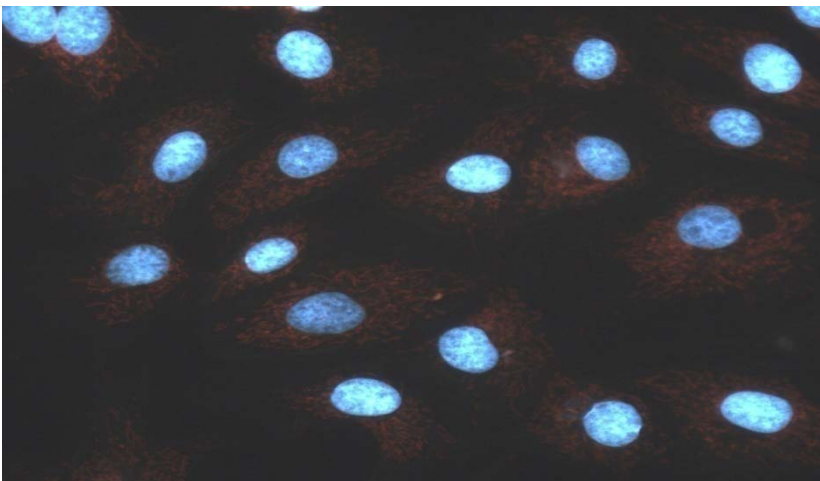
4. JNO-U(L) Image



*Filter Set : JNO-U(L)
Camera : AcquCAM 23GR2
C-mount adapter : 1X
Lens : UPLANAPO40X
Sample : bovine pulmonary artery
endothelial cell, BPAEC*



*Filter Set : JNO-U(L)
Camera : AcquCAM 3G
C-mount adapter : 1X
Lens : UPLANAPO40X
Sample : bovine pulmonary artery
endothelial cell, BPAEC*



*Filter Set : JNO-U(L)
Camera : AcquCAM 5G
C-mount adapter : 1X
Lens : UPLANAPO40X
Sample : bovine pulmonary artery
endothelial cell, BPAEC*

5. Best with these fluorochromes

- Calcofluor White
- DAPI

-> **If you need more information for filter sets, please contact us.**

JNOPTIC CO., LTD.

서울 서초구 남부순환로 335길 35 일광빌딩 201호

Tel : 02-3473-4188 / Fax : 02-6499-0860

<http://www.jnoptic.com> www.chromafilter.co.kr

ihjin@jnoptic.com