

Optical Filter

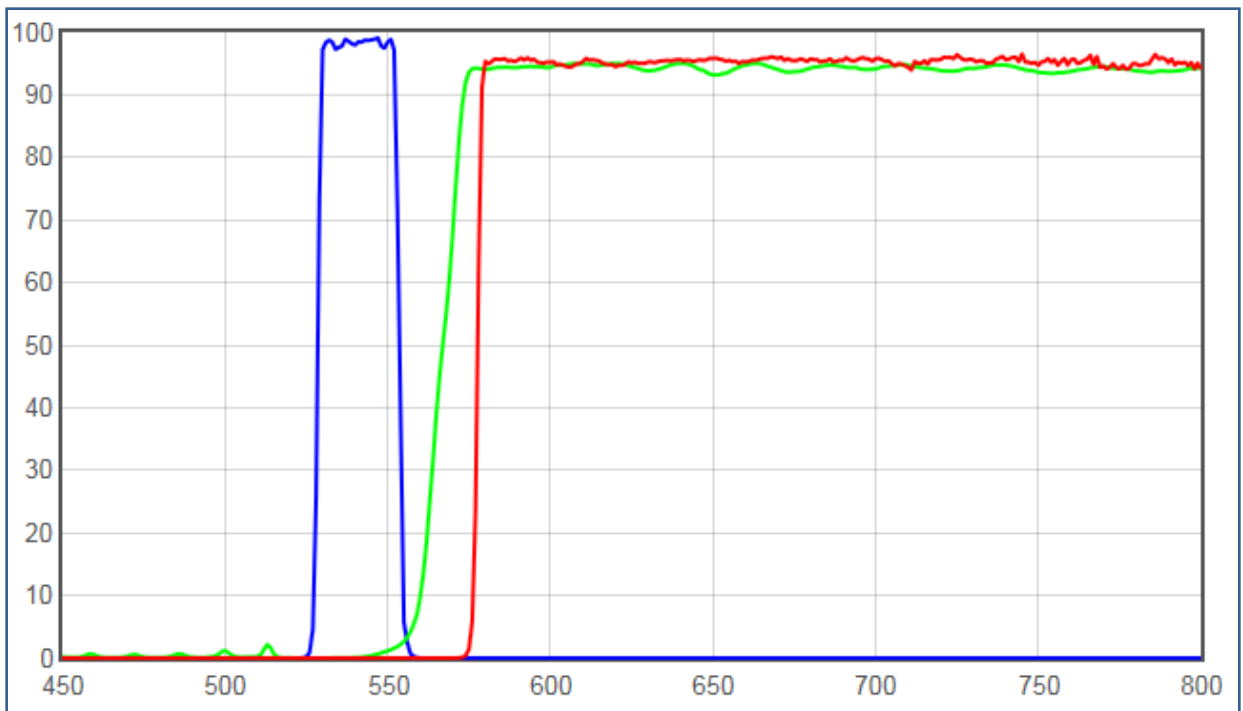
JNO-G(L)

JNOPTIC Filter

– Filter set for TRITC/Cy3 Longpass

- JNO-G(L) filter set induces the light of the Green wavelength range to the sample and leads the generated fluorescence to the observation system.
- Green excitation (Longpass Emission)
- EX : 527~553nm, BS : 565nm, EM : 575nm

1. JNO-G(L) Spectrum



Filters

- AT540/25x
- AT565DC
- AT575lp

Type

- EX
- BS
- EM

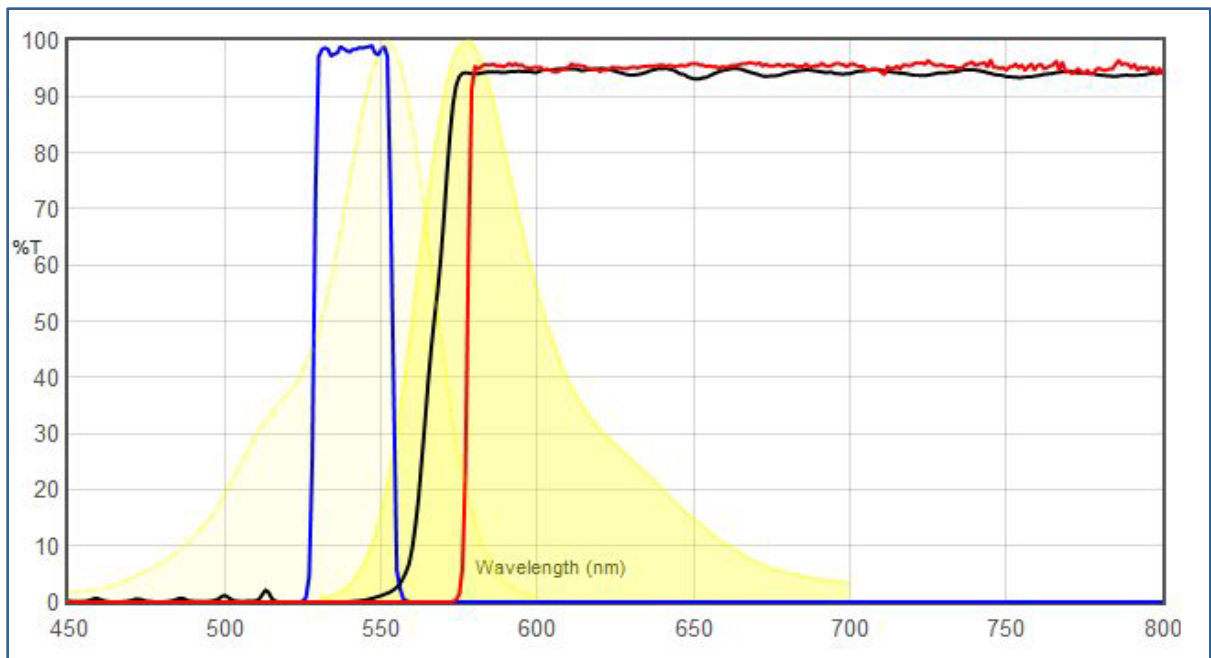
2. JNO-G(L) Spec

- Typical Application(s) : Widefield Microscopy
- Coating : Sputter/Hard Coated
- Round excitation and emission filters mounted in anodized aluminum rings 2.3mm thick, up to 25mm in diameter (for standard sizes)
- Rectangular dichroics up to 26x38mm, 1mm thick, to fit standard microscope manufacturer filter cubes (for standard sizes)

***** For filters larger than 25mm and dichroics larger than 26x38mm, please contact us for pricing.**

3. Main Fluorochromes : TRITC

* TRITC VS JNO-G(L)



TRITC Excitation

AT540/25x (EX)

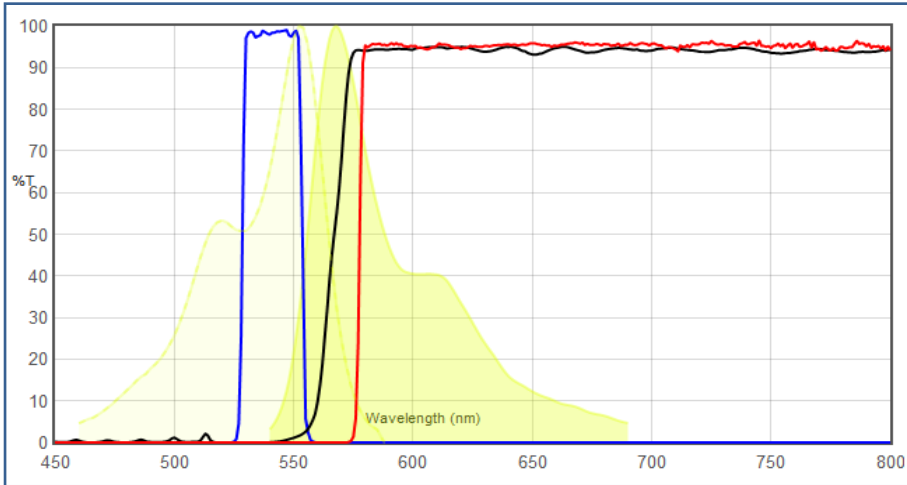
AT575lp (EM)

TRITC Emission

AT565DC (BS)

4. Other Fluorochromes

* Cy3 VS JNO-G(L)



JNOPTIC CO., LTD.

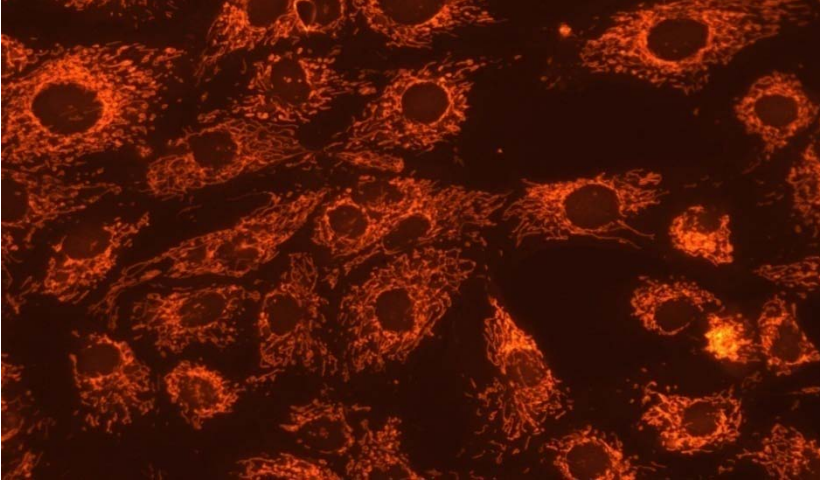
서울 서초구 남부순환로 335길 35 일광빌딩 201호

Tel : 02-3473-4188 / Fax : 02-6499-0860

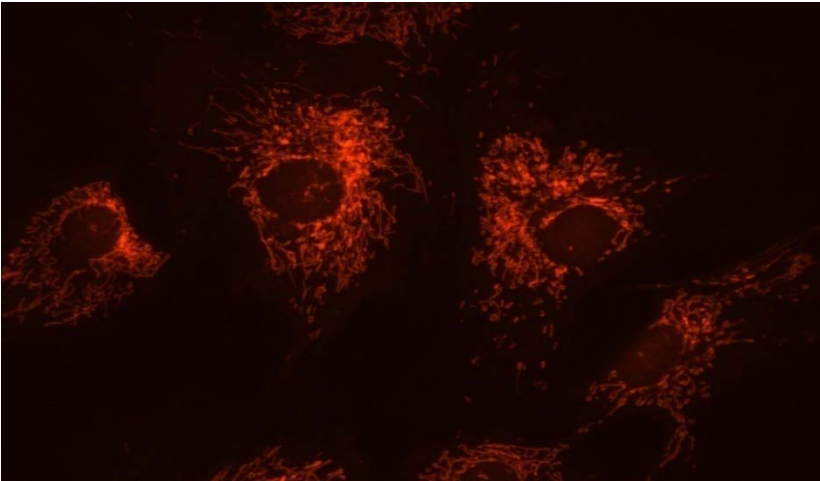
<http://www.jnoptic.com> www.chromafilter.co.kr

ihjin@jnoptic.com

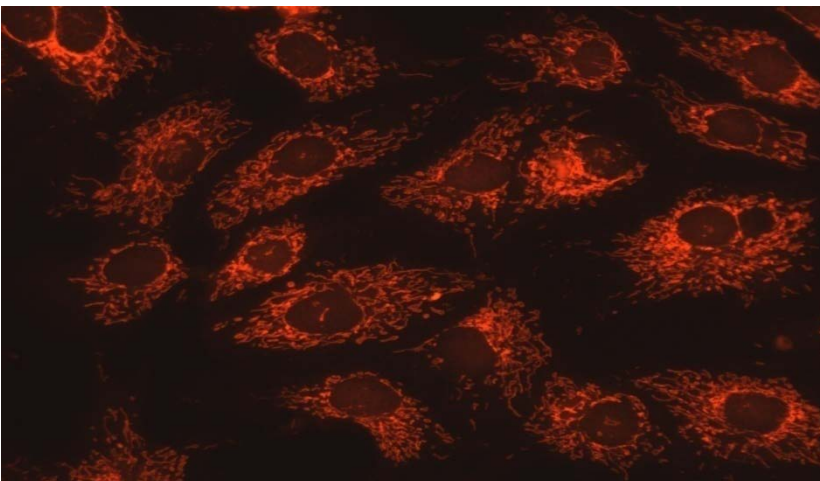
5. JNO-G(L) Image



*Filter Set : JNO-G(L)
Camera : AcquCAM 23GR2
C-mount adapter : 1X
Lens : UPLANAPO40X
Sample : bovine pulmonary artery
endothelial cell, BPAEC*



*Filter Set : JNO-G(L)
Camera : AcquCAM 3G
C-mount adapter : 1X
Lens : UPLANAPO40X
Sample : bovine pulmonary artery
endothelial cell, BPAEC*



*Filter Set : JNO-G(L)
Camera : AcquCAM 5G
C-mount adapter : 1X
Lens : UPLANAPO40X
Sample : bovine pulmonary artery
endothelial cell, BPAEC*

6. Best with these fluorochromes

- R-phycoerythrin

-> **If you need more information for filter sets, please contact us.**

JNOPTIC CO., LTD.

서울 서초구 남부순환로 335길 35 일광빌딩 201호

Tel : 02-3473-4188 / Fax : 02-6499-0860

<http://www.jnoptic.com> www.chromafilter.co.kr

ihjin@jnoptic.com

